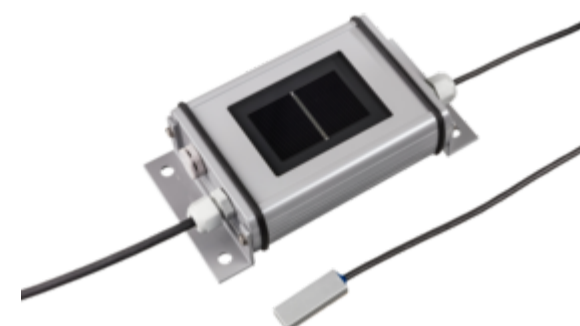


# RADIATION MEASURING TECHNOLOGY

## Silicon Solar Radiation Sensor

Part number: 7.1419.2x.xxx

Silicon PV sensor with PV module temperature sensors offer a cost-effective, robust and reliable solution for measuring solar radiation. In particular, the spectral sensitivity corresponding to the PV modules as well as the very similar incident angle modifier enable an exact analysis of PV yields using the sensor readings.



### Specification

Part number: 7.1419.2x.xxx

#### Radiation

Measuring range	0 ... 1500 W/m <sup>2</sup>
Accuracy	±1 W/m <sup>2</sup> ± 2.0 % of MW Range 100 to 1,500 W/m <sup>2</sup> ., perpendicular incidence, Spectrum AM1.5
Sensor type	Monocrystalline silicon; 50mm x 33mm

#### Temperature

Measuring range	-40 ... +90 °C
Accuracy	1.0 K in the range -35 ... 80°C

#### Interface

Output	RS 485 - Modbus RTU
--------	---------------------

#### General

Power supply	24VDC (10 ... 28 VDC)
Current load	Typically 25mA at 24VDC
Ambient temp.	-35 ... +80 °C 0 ... 100% rel. humidity, including condensation
Cable	LiYCY 4 x 0,25 mm <sup>2</sup> - black, UV resistant
Protection	IP 65
Dimension	Ø 80 x 82 mm
Weight	approx. 350 ... 470g

## Versions

As per 7.1419.2x.xxx, but:

### Product number 7.1419.20.081

#### General

Measuring value	Solar irradiance incl. cell temperature sensor
Electr. connection	3m cable

### Product number 7.1419.20.781

#### General

Measuring value	Solar irradiance incl. cell temperature sensor
Electr. connection	Plug

### Product number 7.1419.21.081

#### General

Measuring value	Solar irradiance incl. cell temperature and Module temperature sensor
Electr. connection	3m cable

### Product number 7.1419.21.781

#### General

Measuring value	Solar irradiance incl. cell temperature and Module temperature sensor
Electr. connection	Plug

## Accessories

No accessories are available for this product.

