

Wind Direction Transmitter Compact

Measuring transmitter for the measurement of the horizontal wind direction with serial output signal. The wind vane consists of fibre-glass reinforced, the housing is made of anodised aluminium and plastic. The instrument has a threaded pin PG 21 with 2 nuts for mounting.

Specification

Part number: 4.3129.00.xxx

Wind direction

Measuring range	0 ... 360 °
Resolution	11.25 °
Accuracy	±5 °

Operating voltage

Electronic	8 ... 30 V DC or 24 V AC
Heating	24 V AC/DC, max 20 W

General

Ambient temp.	-40 ... +70 °C
Electr. connection	12 m cable LiYCY 6 x 0.25 mm ²
Protection	IP 55

Versions

As per 4.3129.00.xxx, but:

Product number 4.3129.00.140

Data output analog

Stromausgang	max. 500 Ω
Wind direction	0 ... 20 mA

Operating voltage

Electronic	> 15 V DC or 24 V AC
------------	----------------------

General

Electr. connection	12 m cable LiYCY 6 x 0.25 mm ²
Dimension	Ø 330 x 220 mm
Weight	1.1 kg

Product number 4.3129.00.141

Data output analog

Stromausgang max. 500 Ω

Wind direction 4 ... 20 mA

Operating voltage

Electronic > 15 V DC or 24 V AC

General

Electr. connection 12 m cable LiYCY
6 x 0.25 mm²

Dimension \emptyset 330 x 220 mm

Weight 1.1 kg

Product number 4.3129.00.161

Data output analog

Wind direction 0 ... 10 V

Voltage output min. 1000 Ω

Operating voltage

Electronic > 15 V DC or 24 V AC

General

Electr. connection 12 m cable LiYCY
6 x 0.25 mm²

Dimension \emptyset 330 x 220 mm

Weight 1.1 kg

Product number 4.3129.00.167

Data output analog

Wind direction 0 ... 2 V

Voltage output min. 1000 Ω

General

Electr. connection 12 m cable LiYCY
6 x 0.25 mm²

Dimension \emptyset 330 x 220 mm

Weight 1.1 kg

Product number 4.3129.00.173

Data output analog

Wind direction 0 ... 5 V

Voltage output min. 1000 Ω

General

Electr. connection 12 m cable LiYCY
6 x 0.25 mm²

Dimension Ø 330 x 220 mm

Weight 1.1 kg

Product number 4.3129.00.740

Data output analog

Stromausgang max. 500 Ω

Wind direction 0 ... 20 mA

Operating voltage

Electronic > 15 V DC or 24 V AC

General

Electr. connection 7 pol. plug

Dimension Ø 330 x 270 mm

Weight 0.4 kg

Product number 4.3129.00.741

Data output analog

Stromausgang max. 500 Ω

Wind direction 4 ... 20 mA

Operating voltage

Electronic > 15 V DC or 24 V AC

General

Electr. connection 7 pol. plug

Dimension Ø 330 x 270 mm

Weight 0.4 kg

Product number 4.3129.00.761

Data output analog

Wind direction 0 ... 10 V

Voltage output min. 1000 Ω

Operating voltage

Electronic > 15 V DC or 24 V AC

General

Electr. connection 7 pol. plug
 Dimension \varnothing 330 x 270 mm
 Weight 0.4 kg

Product number 4.3129.00.767

Data output analog

Wind direction 0 ... 2 V
 Voltage output min. 1000 Ω

General

Electr. connection 7 pol. plug
 Dimension \varnothing 330 x 270 mm
 Weight 0.4 kg

Product number 4.3129.00.773

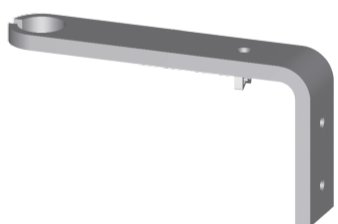
Data output analog



Wind direction 0 ... 5 V
 Voltage output min. 1000 Ω

General

Electr. connection 7 pol. plug
 Dimension \varnothing 330 x 270 mm
 Weight 0.4 kg

Accessories

Product	Product name	Brief description
	Traverse compact for wall mounting 4.3171.2x.000	For storefront mounting of a measuring value transmitter. General Material Aluminium

	<p>Traverse for Wind Transmitters Compact 4.3171.3x.000</p>	<p>For mounting the wind transmitter and wind direction transmitter jointly onto a mast.</p> <p>Material</p> <p>Traverse aluminium (AlMgSi0.5) Gripping clamb stainless steel</p> <p>General</p> <p>Sensor distance horizontal 0.8 m Weight 0.35 kg Mounting hole Ø 29 mm</p>
	<p>Traverse short for Wind Transmitters Compact 4.3171.4x.000</p>	<p>For mounting one wind transmitter or wind direction transmitter at a mast.</p> <p>Material</p> <p>Traverse aluminium (AlMgSi0.5) Gripping clamb stainless steel</p> <p>General</p> <p>Sensor distance horizontal 0.4 m Weight 0.3 kg Mounting hole Ø 29 mm</p>



Geovane
4.3190.00.900

The product set combines the precise wind vanes from Thies CLIMA with the advanced Geovane from Kintech Engineering. The Geovane uses GPS and the sun position to automatically determine the exact north direction 1° accurate. This combination ensures the highest accuracy of wind direction against the geographic north point as a reference.

- Geovane for automatic north correction
- 1° precise wind vanes from Thies CLIMA
- Wind vane and geovane are preconfigured
- Ideal e.g. for site surveys, power curve monitoring and meteorology

Wind direction

Measuring range	0 ... 380 °
Resolution	0.06° RS-485 0.11° Analog voltage outputs 0.06... 0.16° Frequency output
Accuracy	1°

Miscellaneous

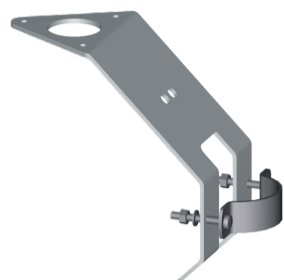
Electrical input	0 ... 30 V
------------------	------------

Operating voltage

Electronic	6 ... 12 V DC
------------	---------------

General

Ambient temp.	-25 ... +85 °C
Mounting	Onto mast tube Ø34mm
Protection	IP 67
Measuring time	1, 5, 10, 30, 60 seconds
Weight	0,815 kg



Holder compact
506347

The holder serves for the mounting of a wind transmitter, Compact-type, onto an instrument carrier or mast.

General

Mounting	for mast tubes \varnothing 35 ... 50 mm
Material	stainless steel (V2A)
Dimension	80 x 150 mm
Weight	0.35 kg
Mounting	hole \varnothing 32.5 mm

