

Pyranometer GSM 3.3

The measurement is cos-corrected. Delivery includes calibration certificate.

Specification

Part number: 7.1415.09.xxx

Radiation

Measuring range	0 ... 1300 W/m ²
Cosinus-correction	error f2 3 %
Spectral range	380 ... 1100 nm
Non-linearity	5 %
Abs. error	±10 %
Diffuser	PTFE
Dome	PMMA
Sensor type	Silizium photo diode

General

Ambient temp.	-20 ... +60 °C
Electr. connection	plug with 5 m cable
Dimension	Ø 80 x 86 mm
Weight	0.3 kg

Versions

As per 7.1415.09.xxx, but:

Product number 7.1415.09.041

Data output analog

Output type	4 ... 20 mA
-------------	-------------

General

Power supply	9 ... 24 V DC
--------------	---------------

Product number 7.1415.09.240

Data output digital

Protocol	ASCII
Output type	2 wire RS485

Data output analog

Output type	0 ... 20 mA
-------------	-------------

General

Power supply	9 ... 24 V DC
--------------	---------------

Product number 7.1415.09.241

Data output digital

Protocol	ASCII
Output type	2 wire RS485
Data output analog	
Output type	4 ... 20 mA
General	
Power supply	9 ... 24 V DC

Product number 7.1415.09.251

Data output digital	
Protocol	ASCII
Output type	2 wire RS485
Data output analog	
Output type	0 ... 5 V
General	
Power supply	9 ... 24 V DC

Product number 7.1415.09.261

Data output digital	
Protocol	ASCII
Output type	2 wire RS485
Data output analog	
Output type	0 ... 10 V
General	
Power supply	14 ... 24 V DC

Product number 7.1415.09.340

Data output digital	
Protocol	MODBUS RTU
Output type	2 wire RS485
Data output analog	
Output type	0 ... 20 mA
General	
Power supply	9 ... 24 V DC

Product number 7.1415.09.341

Data output digital	
Protocol	MODBUS RTU
Output type	2 wire RS485
Data output analog	
Output type	4 ... 20 mA
General	
Power supply	9 ... 24 V DC

Product number 7.1415.09.351

Data output digital

Protocol	MODBUS RTU
Output type	2 wire RS485

Data output analog

Output type	0 ... 5 V
-------------	-----------

General

Power supply	9 ... 24 V DC
--------------	---------------

Product number 7.1415.09.361

Data output digital

Protocol	MODBUS RTU
Output type	2 wire RS485

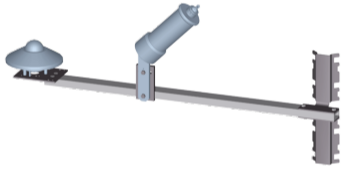

Data output analog

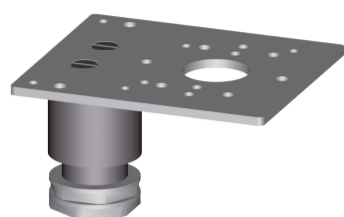
Output type	0 ... 10 V
-------------	------------

General

Power supply	14 ... 24 V DC
--------------	----------------

Accessories

Product	Product name	Brief description
	Traverse 0,8 m 4.3171.40.002	For mounting of a Pyranometer CMP11 / 6 / 3 And a sunshine duration sensor-CSD3 onto a mast. General Clamping range Ø 48 ... 102 mm Sensor distance 0.4 / 0.8 m from mast Material Aluminium / Stainless steel Weight 1 kg
	Hanger 1 m (for radiation sensors) 4.3185.xx.009	The hanger is used for laterally mounting of a radiation- or brightness transmitter onto a mast. General Length 1 m Material Aluminium Tube diameter Ø 50 mm Weight 1.8 kg

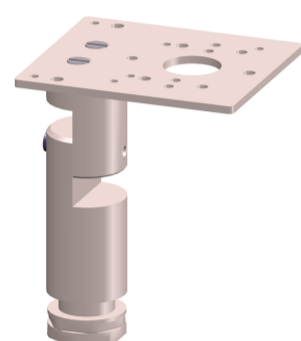


Adapter
Compact
506345

The adapter serves for mounting a radiation transmitter, baro transmitter or brightness transmitter onto a traverse (4.3171.30.000, 4.3171.40.000) or holder (506 347).

General

Material Aluminium, anodized
Dimension 100 x 115 x 65 mm
Weight 0.5 kg



Adapter
Compact 0 ... 90
° adjustable
508850

The adapter serves for mounting a radiation transmitter, baro transmitter or brightness transmitter onto a traverse (4.3171.30.000, 4.3171.40.000) or holder (506 347).

General

Material Aluminium, anodized
Dimension 100 x 115 x 65 mm
Weight 0.5 kg
Function 0 ... 90 ° adjustable

